

EVS protects the character of your home



RetroWood Otago Ltd, 85 Hillside Road, Dunedin, New Zealand, Phone 03 4550 9597 www.EVSGlazing.nz

EVS Triple CLIP-ON GLAZING



Window Technology for Character Homes



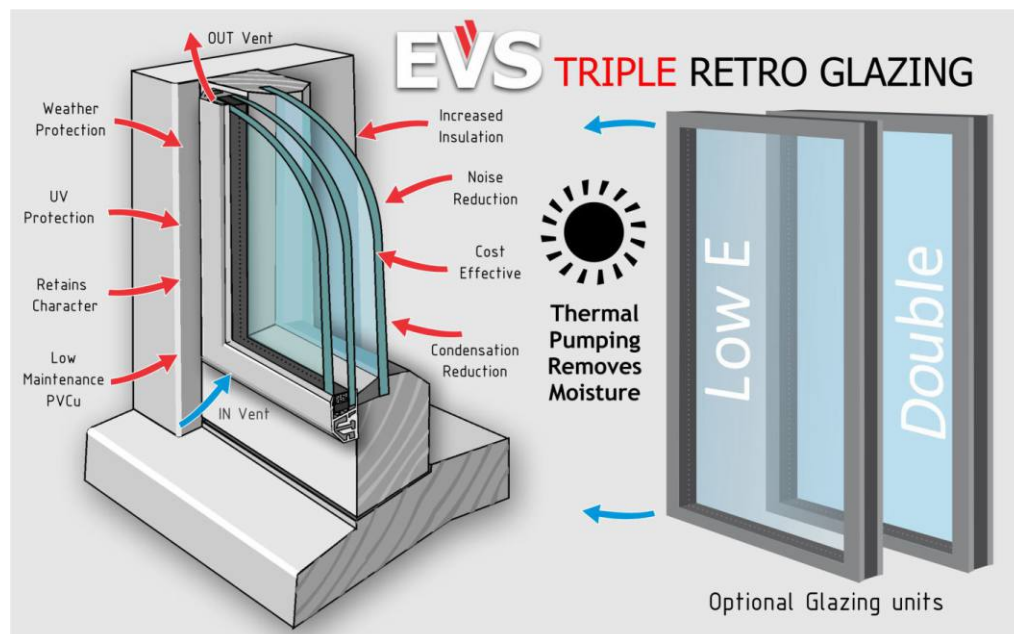
Revolutionary New Glazing System

Retro glazing older character homes usually involves removing existing glass and sometimes character features such as astragals and lead-light windows. The EVS Triple Retro glazing system simply adds a double glazed panel to the outside which allows the original glass and character features to remain. This saves time and delivers higher performance insulation and protection.

The key to the EVS technology is using thermal pumping to remove moisture that collects between the existing glass and new panel. As the panel heats up during the day, the warm air mobilizes the moisture which rises to the top of the panel where it is pumped out through the top vents by the action of heat expansion. As the panel cools down, it contracts and draws in external dryer air.

The vents use the unique qualities of Bentonite clay that can absorb moisture from the air, but unlike other synthetic desiccates Bentonite clay can release the moisture at low temperatures allowing the moisture to be captured in cool temperatures and released when the panel warms up.

EVS uses thermal pumping technology



EVS

DOUBLE and TRIPLE RETRO GLAZING



EVS Glazing provides a 10 year Warrantee on a range of factors that will ensure ongoing performance of window protection. Any faults identified in the Product or Workmanship within the Guarantee period will be repaired or replaced. The Customer is required to paint their EVS frames within 6 months, so they can request their Guarantee, which will be back-dated to the date that installation was completed.

Warentee

Warentee			DOUBLE	TRIPLE
1	Product Frame and Glass	EVS frames are manufactured and glass fitted in good condition, without damage or faults.	✓	✓
2	Product Installation	EVS fitted by a Licensed Installer with correct fixings and sealants to prevent leaks and mechanical failure.	✓	✓
3	Protection against Heat Loss	Improved thermal insulation based on the selected product's rated R Value	✓	✓
4	Protection against Condensation	Significant reduction in condensation. Lack of suitable ventilation may cause some condensation to still occur.	✓	✓
5	Protection against Noise	Improved acoustic insulation based on selected product's noise reduction value.	✓	✓
6	Internal Mould / Rot Protection	Significant reduction of internal surface mould or rot caused from condensation on windows.	✓	✓
7	External Mould / Rot Protection	Significant reduction of external mould or rot caused from moisture entering around the edge putty.	✓	✓
8	Protection against Weather	Prevention of leaks, or drafts within the glazing panel.	✓	✓
9	Protection against UV	Significant reduction in damaging ultraviolet light transmission through the glazing panel when Low-E glass is specified.	✓	✓
10	Protection against Impacts	When Safety Glass is specified the toughened glass will increases resistance to breakages from impacting objects or perople.	✓	✓

Limitations of Warrantee

EVS Window Technology warrants its products inline with the terms and conditions set out in the customer Quotation. EVS Glazing is a product designed to be used with existing timber framed windows and as such EVS doesn't offer any warranty in relation to the condition of the existing glass, timber or paintwork that may contain damage, markings, dust or imperfections. These items may be noted and addressed within the scope of the quote, but it is the responsibility of the owner to ensure these imperfection are addressed to their satisfaction before the EVS panels are attached.

Cleanliness of windows: Installers will use standard cleaning processes to prepare the window before EVS installation, but EVS makes no warranty of levels of cleanliness.

Breakages: EVS or its Licensed Installers will remedy any breakages that occur during installation, but will not be held liable for any subsequent cracks that may occur after installation.

Customer Responsibilities: The customer must ensure that the EVS units are kept painted and maintained in accordance with the Paint manufacturers recommendations. Failure to adhere to the proper maintenance requirements will result in the Guarantee being void.

Reporting an Issue: If a customer finds an issue in relation to the terms of the Guarantee, they need to report it to their Licensed Installer.

Limitation of Warrantee: The warrantee only extends to cover the cost of replacement or refund on the defective product or service.

Installation can take as little as 30 minutes on a smaller window and progressively long on larger windows. The key to making the process quick and simple is to ensure each step is done carefully and ensuring everything is clean and tidy.



STEP 1



Step 1: If the window is already in a good painted condition it can simply be cleaned ready for the panels to be added. If the paint work has deteriorated or there are repairs to putty or rot then this work has to be completed before the units are installed.

STEP 2



Step 2: The EVS panels are positioned onto the correct location and pressed firmly before being removed, leaving behind the clip mount beads. The clip mount beads need to be carefully marked before permanently fixed in place using screws.

STEP 3



Step 3: The EVS panels is now repositioned back onto the window and clipped back onto the clip beads for a solid fixing.

STEP 4



Step 4: The EVS panel is sealed around the edges using a sealant to prevent water from leaking in from the edges. The top has a flashing added to provide additional fixing as well as increased protection from long term weathering.

STEP 4



Step 5: The EVS panel is finally painted to match the timber paintwork and provide a protective coating over the sealants. It is recommended to use a PVC etch primer and gloss enamel (water bourn) top coat for a lasting finish.



Click On and Off

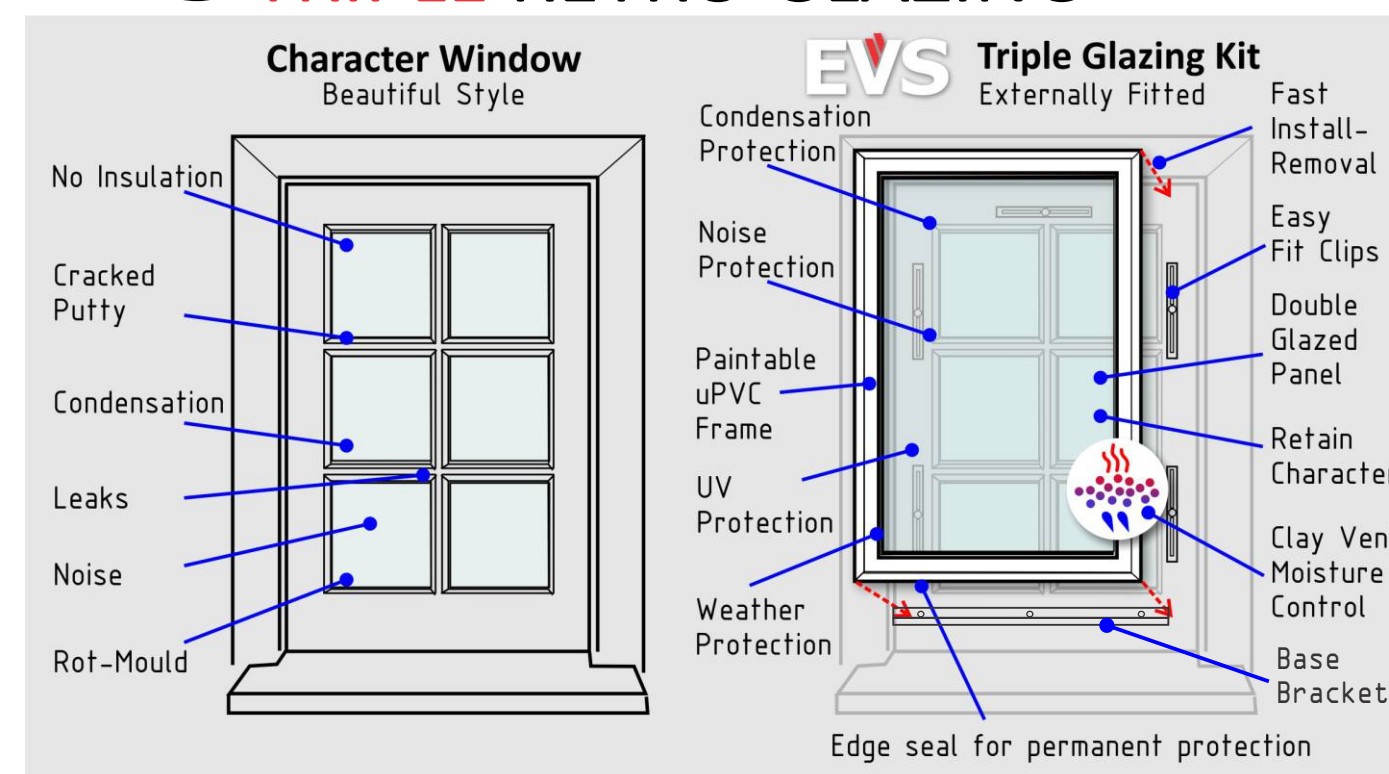


Can be shaped



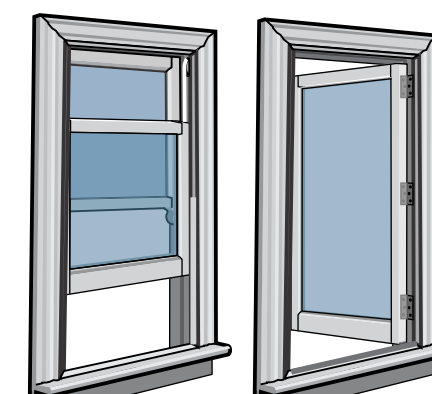
Heat Bending

Heat bending can achieve well controlled curves that provide a high quality finish

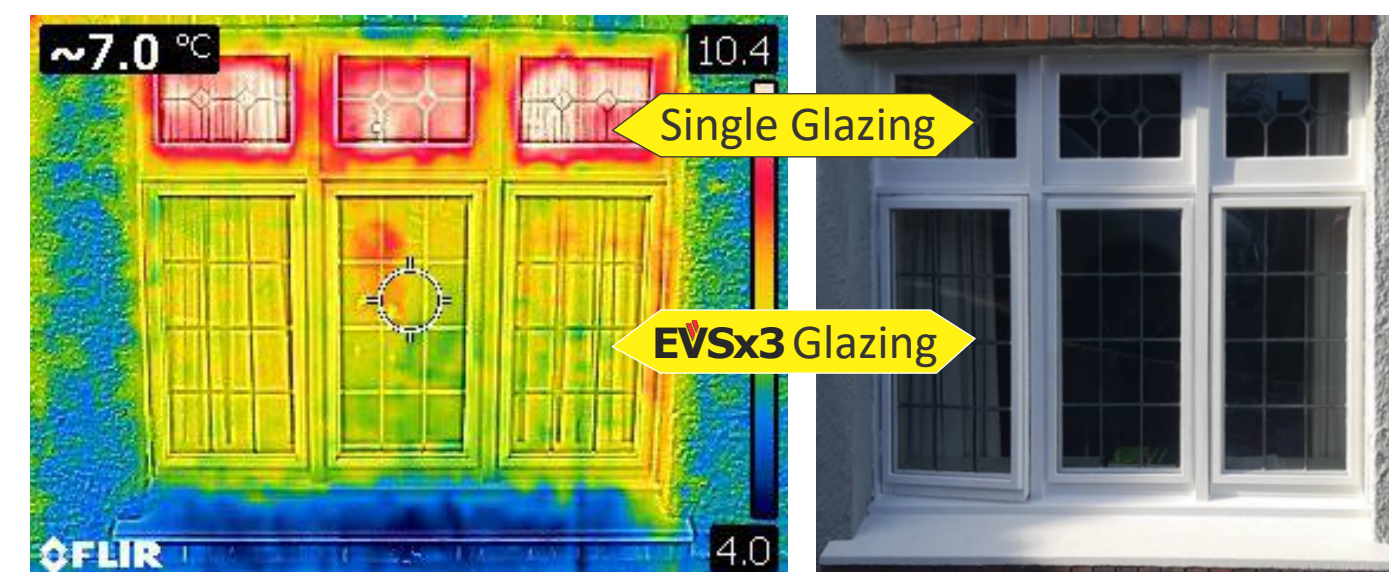


Solutions for most styles of heritage windows

EVS has developed a number of solutions for triple glazing both Casement windows and Double Hung windows. Double Hung are a more complex window system and require more work compared to fitting standard casement style windows. EVS can provide awning opening or traditional weighted double hung window slide opening panels. The biggest consideration is preserving the original character while delivering the highest performance. It is recommended that a window set only needs one or two opening panels to reduce draughts and cost. The windows are also given a health check and repaired where rot has been discovered to ensure that window provides ongoing service.



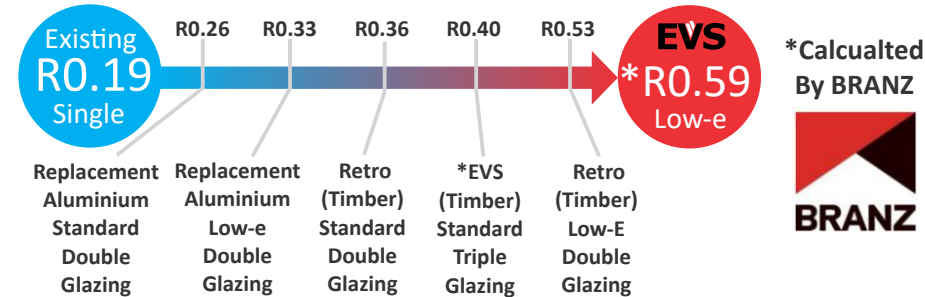
Double Hung Casement





EVS provides top performance insulation

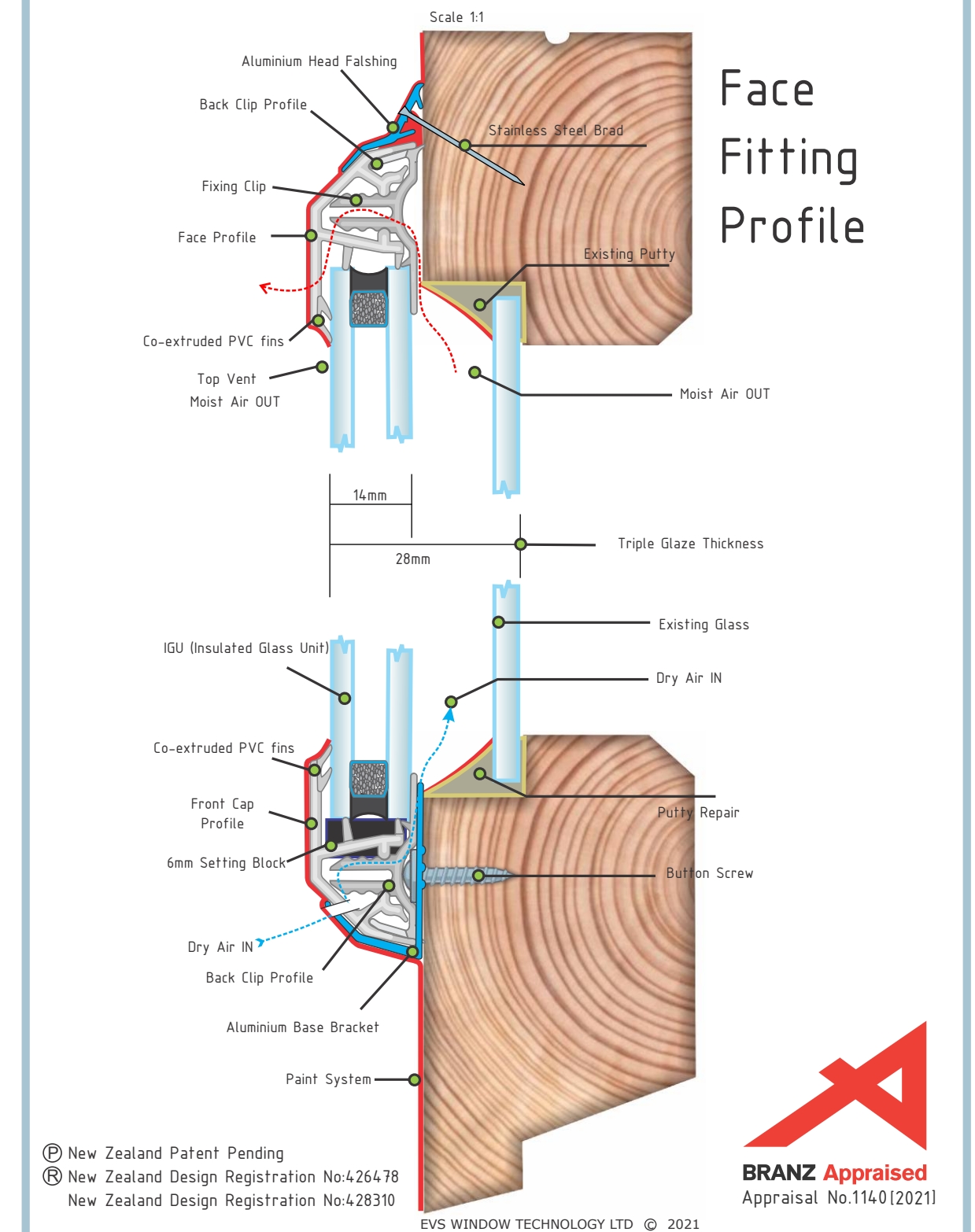
EVS Triple Glazing has been calculated by BRANZ to have a top performing insulation (R) value of R0.59 when using Low-E Argon Filled panels. The key advantage with EVS is the original glass panel is retained providing a second insulated cavity for extra insulation



EVS protects your windows from condensation

These windows were photographed part way through the EVS installation process and record the dramatic improvement of condensation reduction compared to the single glazing panels. Condensation can be totally eliminated by using adequate ventilation systems, but EVS helps to reduce the damaging effects of condensation and moisture from your windows through increased thermal performance.

EVS Triple Retro Glazing



EVS profiles are made from durable lasting materials

EVS has developed a robust solution that uses a combination of co-extruded rigid and soft PVC. This combination ensures the seals fit firmly around the glass and for a good weather tight seal. The various chambers serve to provide a ventilation system that keeps the edge of the IGU dry and maintain ongoing removal of trapped moisture. The panels are fixed using rigid Aluminum flashings tested for High wind loadings for long term protection against the weather.