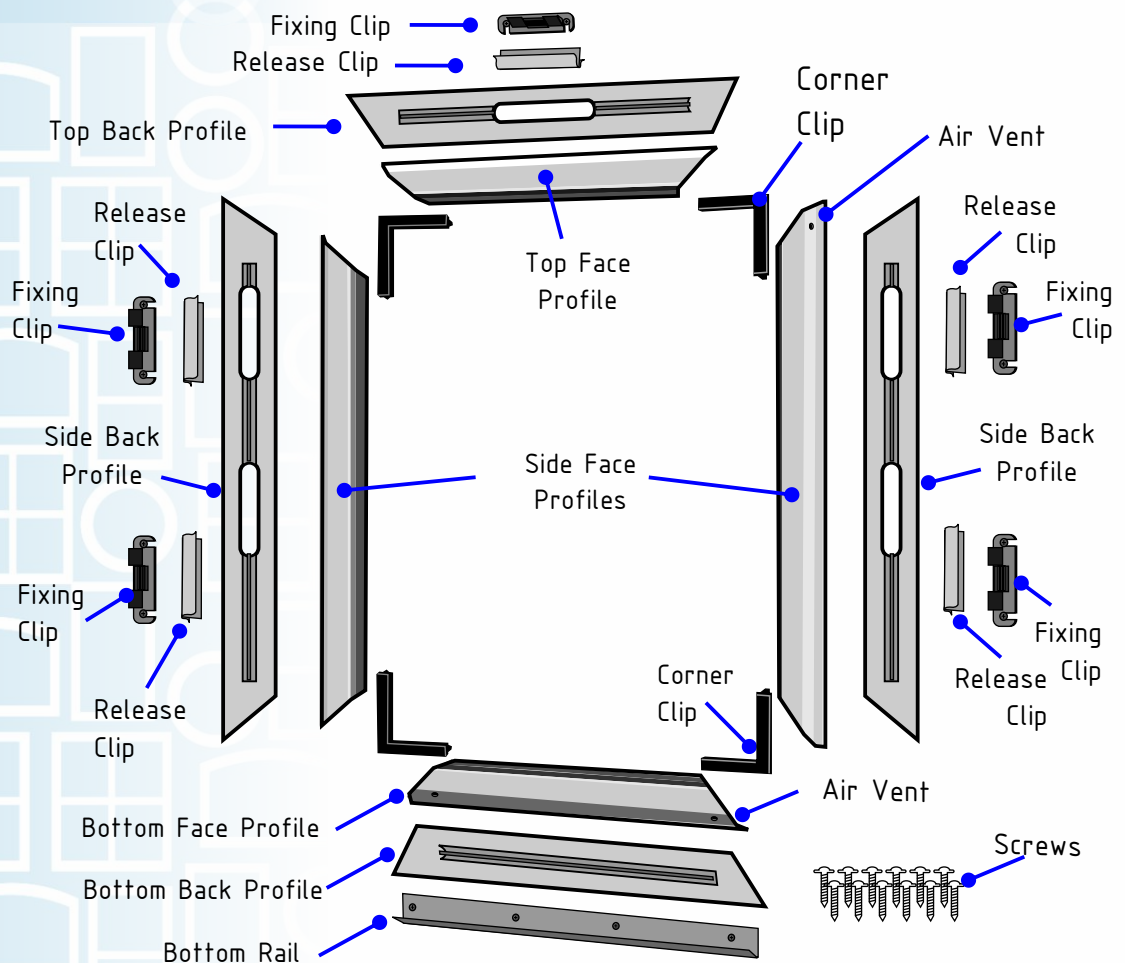
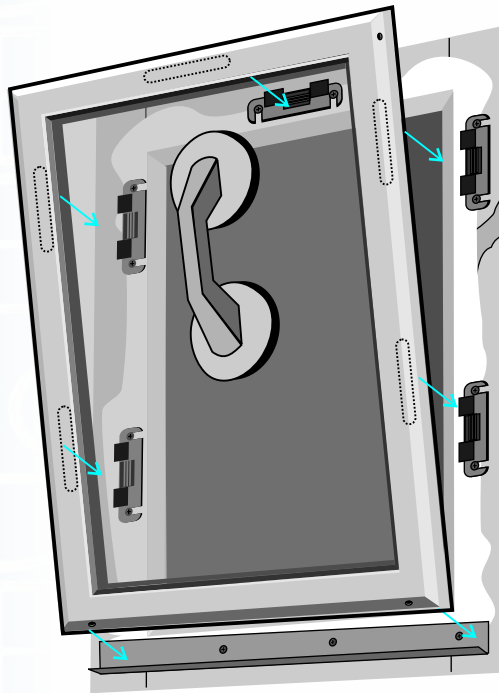


INSTALLERS FOR

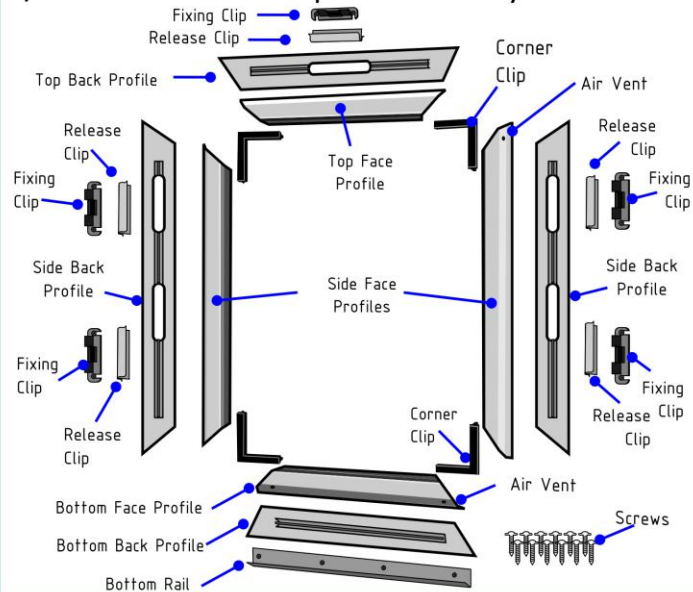
EVS RETRO GLAZING

Window Technology for Character Homes

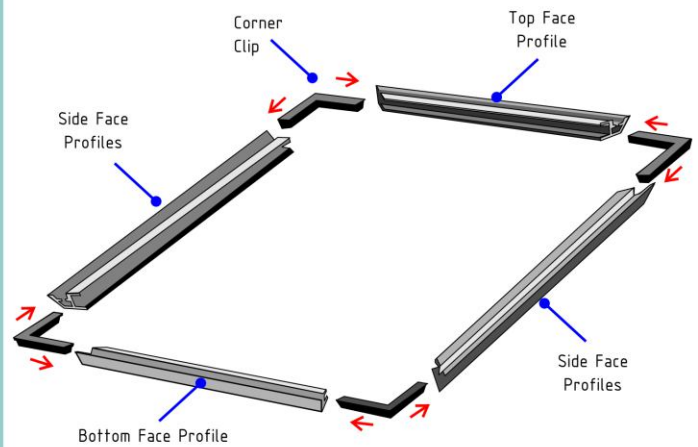


Assembling an EVS panel

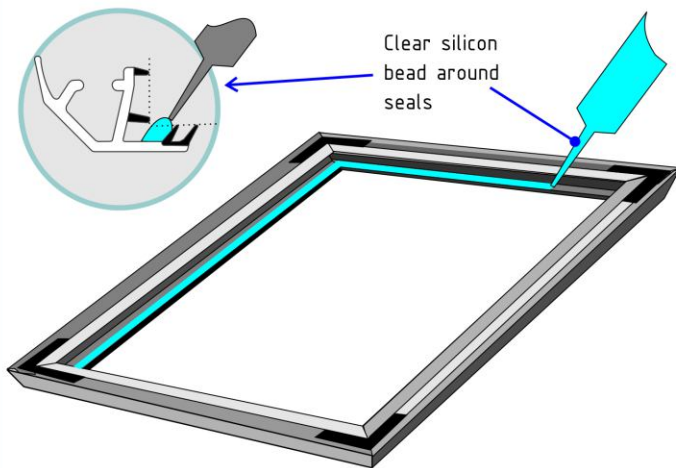
1/ Check to see all the parts are ready



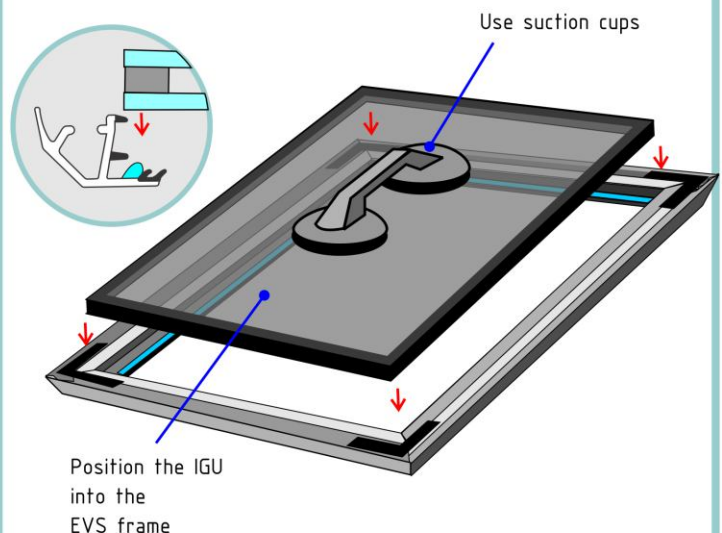
2/ Clip together the Face Profiles by inserting the corner clips into each corner



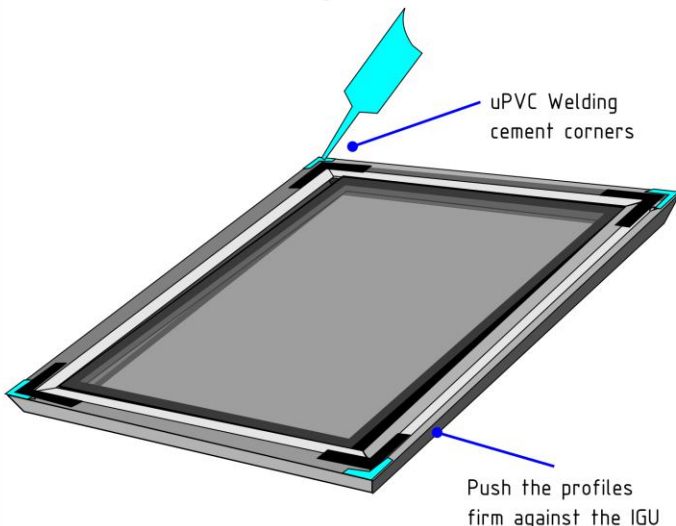
3/ Apply clear silicon around the face seal



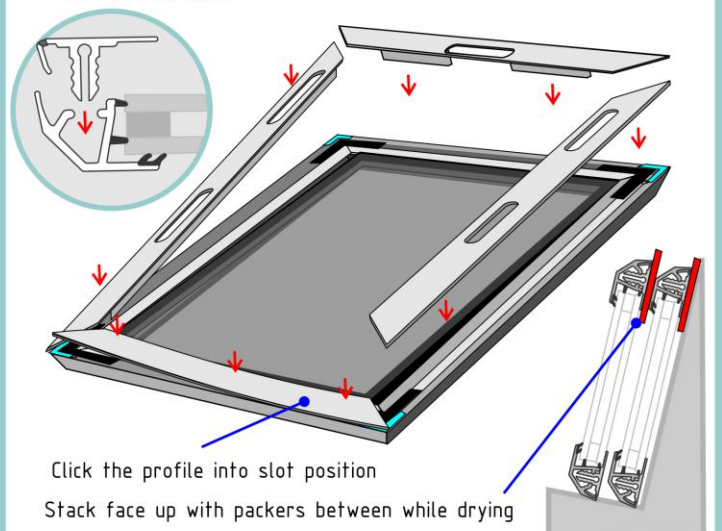
4/ Insert glazing panel



5/ Insert uPVC welding cement into each corner

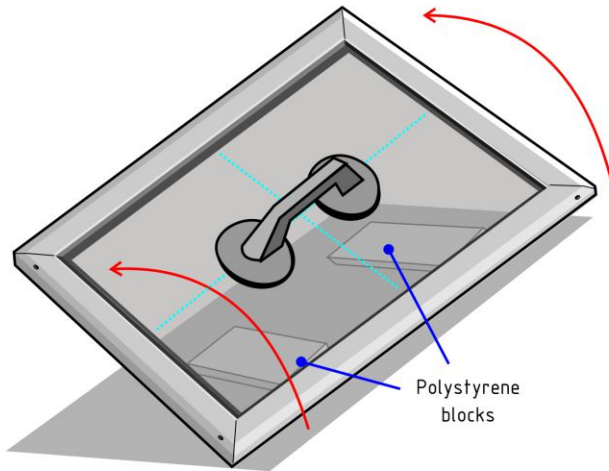


6/ Clip back profiles into place and leave to dry for 24 hours



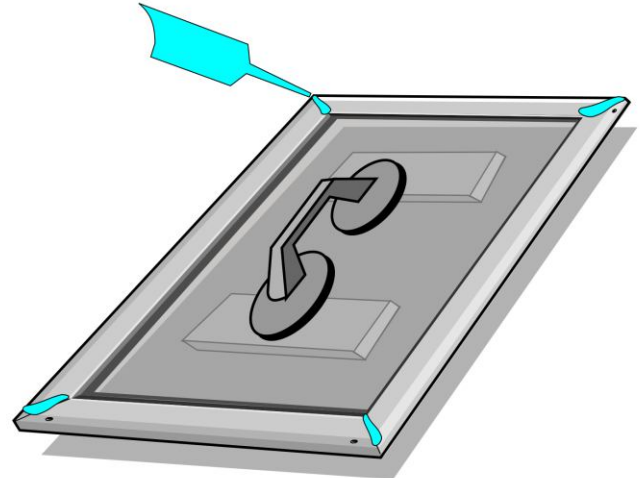
Preparing and pre-painting the face

1/ Roll panel onto polystyrene so the edges don't touch the work surface

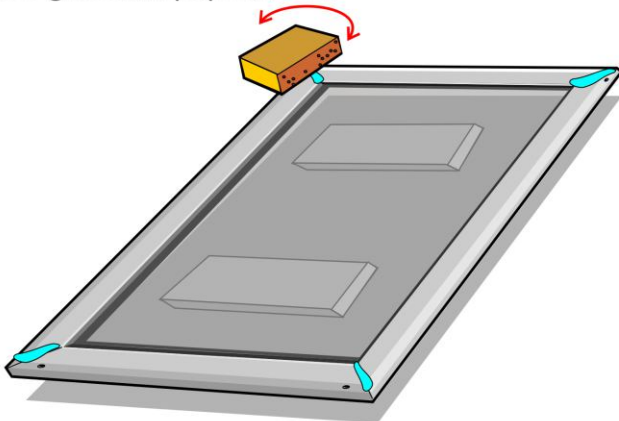


Keep the glass clean by using suction cups

2/ Fill the corners with uPVC cement and leave for 1 hour to cure

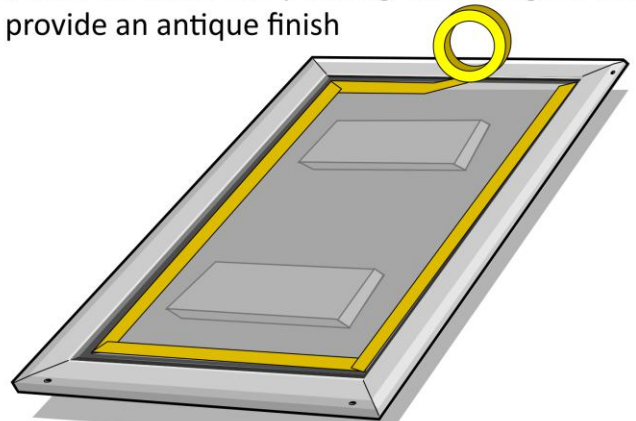


3/ Carefully sand uPVC cement smooth with 120 grit sand paper/block



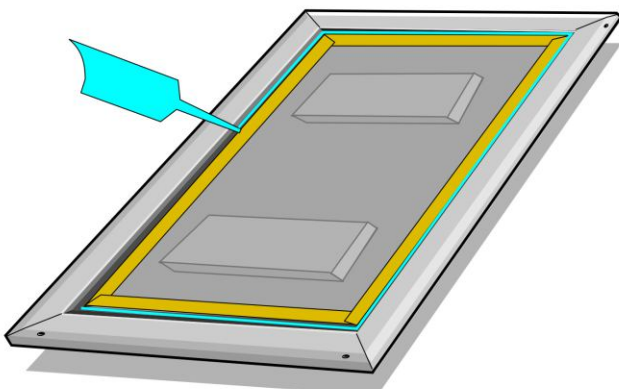
Additional filling can be done using Contract filler if required

4/ Painting onto the profile shoulder can provide a modern finish and painting onto the glass can provide an antique finish



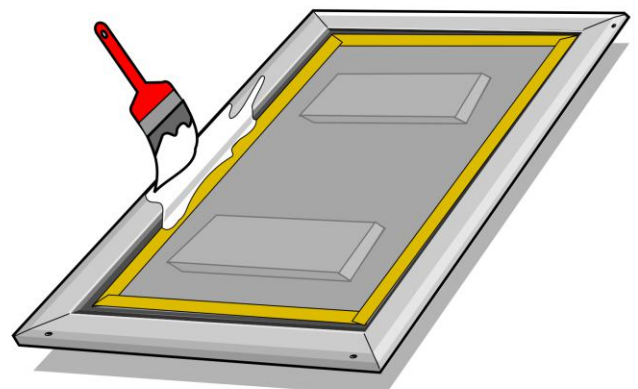
For the Antique finish, mask off the edge of the seals by 5mm

5/ For an Antique finish you can also add a small amount of no-more-gaps sealant to prevent paint bleed under the masking tape



Finish it off with a damp rag with a single pass

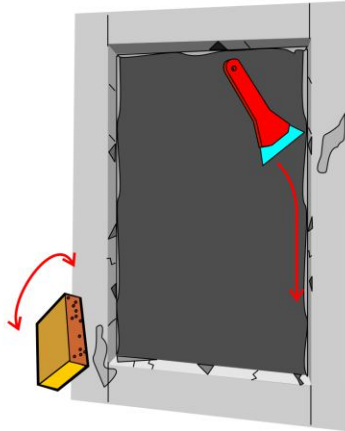
6/ Pre-painting the edges makes for quicker easier installation with only some touch ups required later



Peeling the tape off straight after painting will minimise edges peeling off

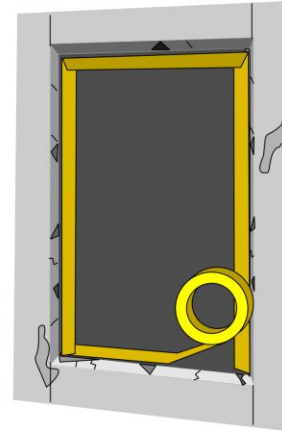
Preparing and painting the window

1/ Prepare the windows by removing loose paint and putty using scrapers and sanding tools

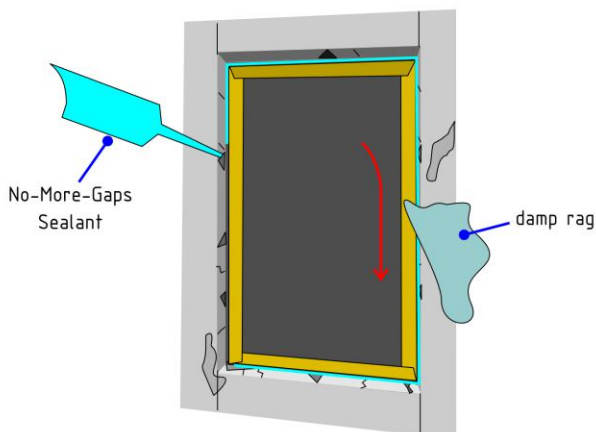


Check for rot by tapping the timber and listen for a dull thud. It may be repaired or need replacing

2/ Mask the edges back from the putty by 3-5 mm

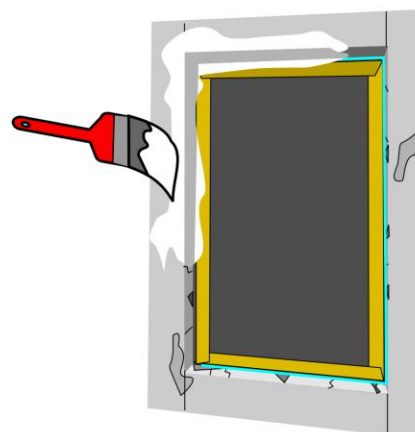


3/ Apply a No-more-gaps filler around the edges and wipe smooth with a damp rag



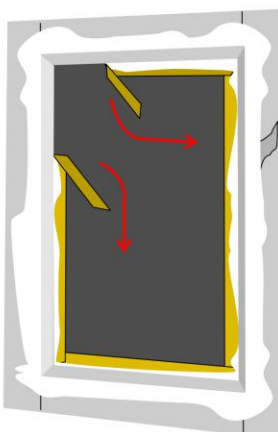
Finish each panel as you go otherwise the sealant will dry

4/ Paint down onto the glass around the putty edges then back at least 1cm



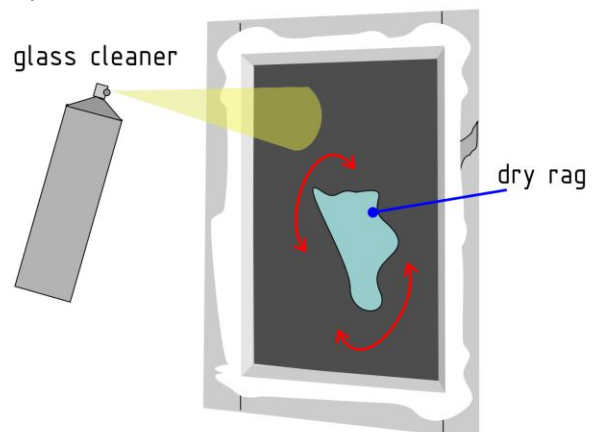
The outer edges can be painted after the panel has been fitted

5/ Peel back taped edges on a sharp angle while the paint is still wet



Keep the wet tape away from other surfaces to avoid a mess to clean up

6/ Wait until you are ready to install the EVS panels and clean the window

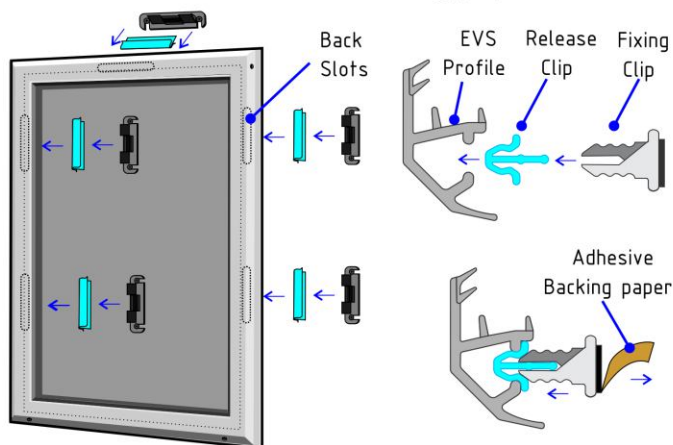


You may need to touch up the paint work with a razor blade and paint before cleaning

Installing an EVS panel

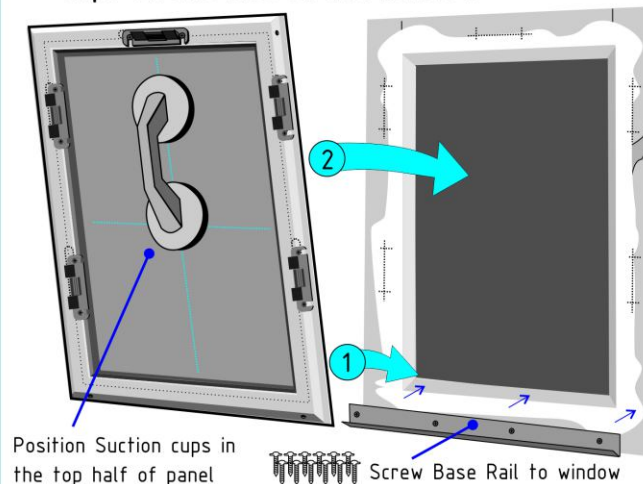
1/ Seat the Release clips into the back slots

- Seat the Fixing clips onto the Release clips
- Remove the adhesive backing paper



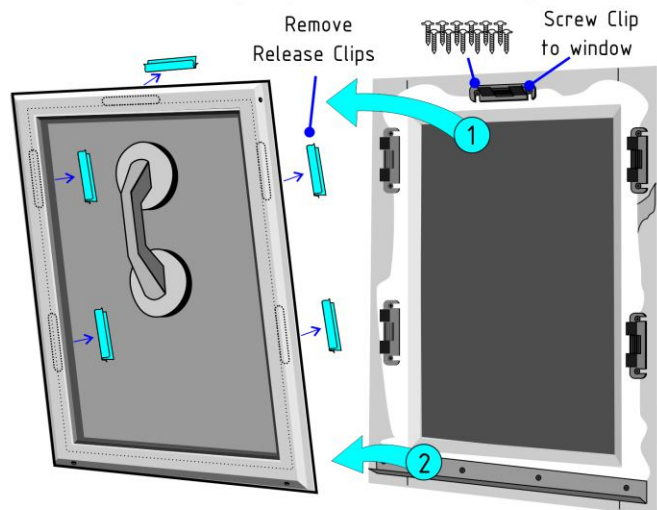
2/ Screw fix the base rail along the bottom

Position the EVS panel in place to locate the clips on the face of the window

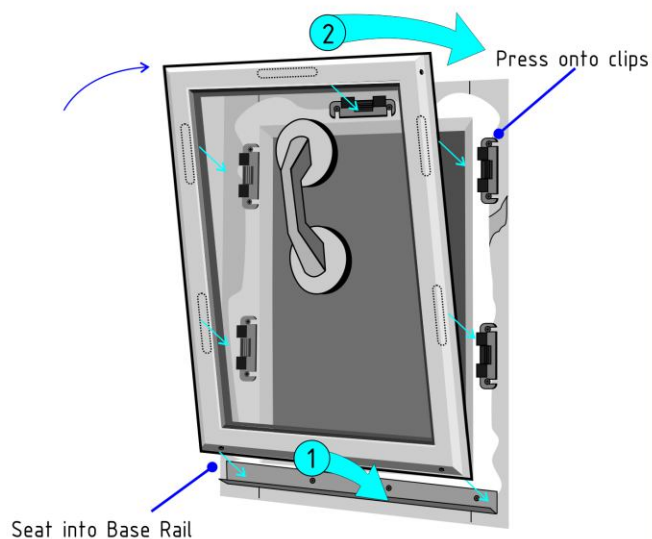


3/ Pull EVS panel off and remove the release clips

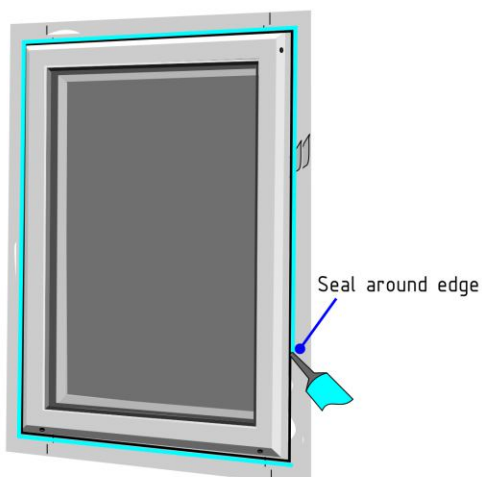
Screw the fixing clips without moving them



4/ Push panel back onto the clips

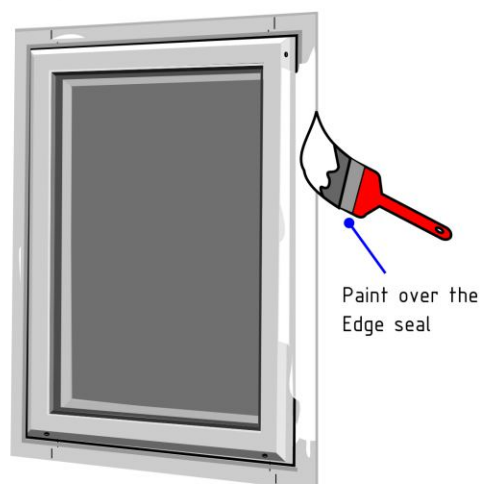


5/ Edge seal between the EVS panel and frame



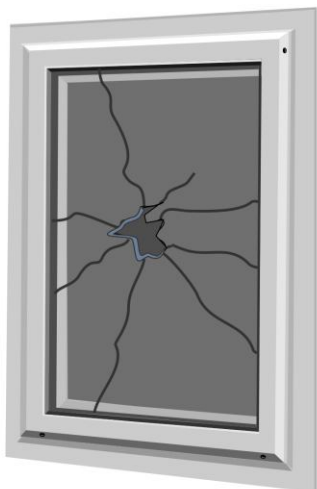
6/ Paint the edges of the window frame

Careful not to paint over the air vent holes

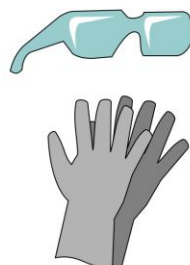


Removing an EVS panel

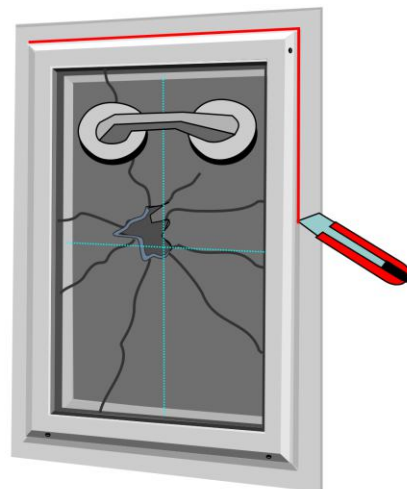
1/ Repair is a simple task. If you are careful not to cause damage, the frame can be reinstalled.



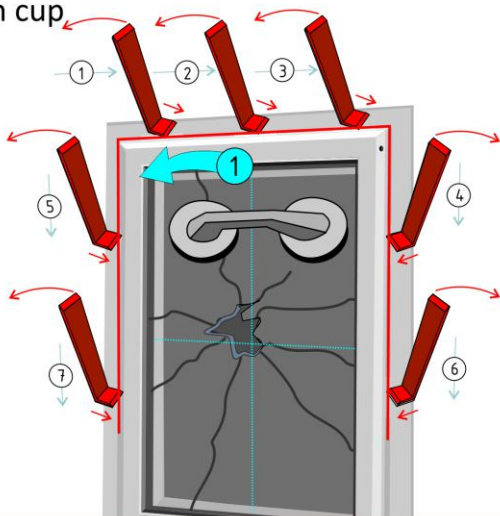
2/ Use a sharp knife and cut through the sealed edge. Place a suction cup as close to the top as possible



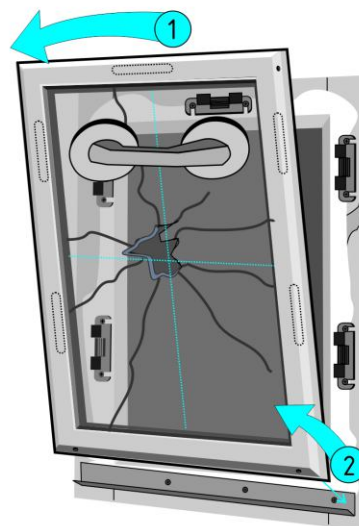
Use your personal safety gear



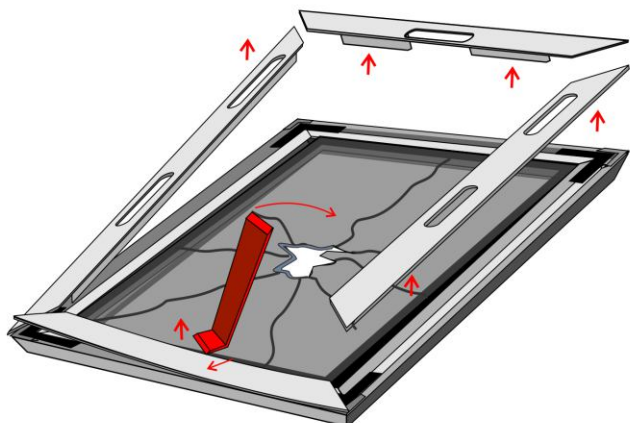
3/ Use a thin Pry bar and systematically work around the edge while pulling back on the suction cup



4/ The clip fixings will disengage and the panel will fold off



4/ Place the unit face down and remove the back profiles using the Pry bar from the inside edge



5/ The glass panel will be attached to the silicon edge seal so start at a corner and pull up the panel while holding down the edge profile

